

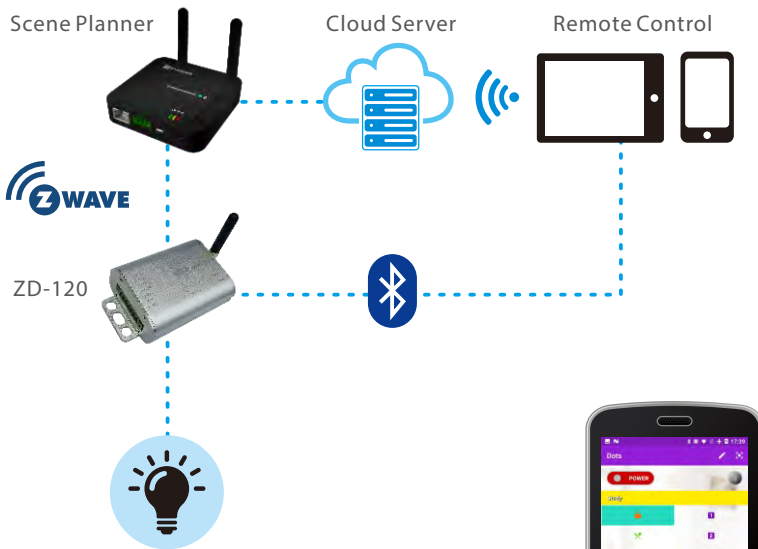
ZD-120 RGBW LED Dimmer

Free to change the light color



Empers RGBW LED Dimmer (ZD-120) is an advanced wireless LED strips controller. It not only supports traditional RGB channels, but also the additional white light channel, which allows for adding pastel colors to the color scheme. The device may control up to four channels of connected light sources.

ZD-120 is a Z-Wave & Bluetooth compatible RGB/RGBW controller. With RGBW you can create different illumination effect as unique lighting scenes to match your mood or a special occasion. This device can be included in a Z-Wave network controlled by the central gateway; meanwhile it can also work independently as a stand-alone product. With its Bluetooth connectivity, users may use the APP to edit and control their preferable light schemes.



Control your lighting from anywhere you like



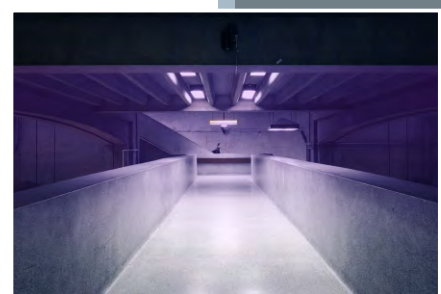
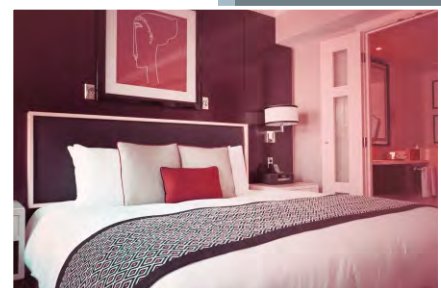
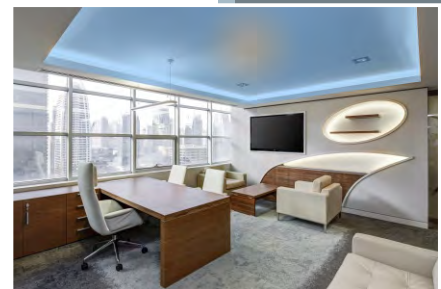
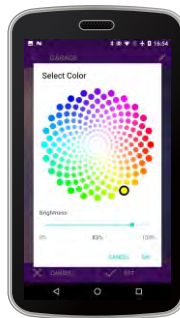
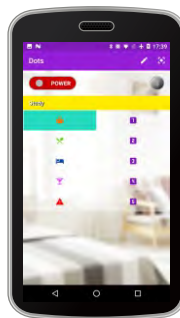
Let the lights light up on schedule with your favorite color



Create lighting scenes for different events or holidays



Reduce energy costs from unnecessary waste



Features

- ◆ Control light colors with PC, smartphone or tablet
- ◆ Create lighting scenes for entertaining or events
- ◆ Schedule lighting to come on or off at certain times of the day
- ◆ Possibility to install in hotel, ballroom, casino...etc
- ◆ Support Bluetooth connection
- ◆ Compatible with Z-Wave network controller
- ◆ Support DC powered

Specification

Z-Wave

RF Frequency	908.42 MHZ (US), 868.42 MHZ(EU), 922.5 MHZ (JP)
Range	Up to 50m (outdoors) and 30m (indoors)

Bluetooth

Standard	BLE 4.0
Range	10m (32ft)

Power

DC Input Power	12/24V DC
Rated Output	12A combine, 5A single
Max. Load	12V 140W, 24V 280W

Environmental Limits Operating

Operating Temperature	-20 to 70°C
Storage Temperature	-40 to 85°C
Ambient Relative Humidity	5 to 95% (non-condensing)

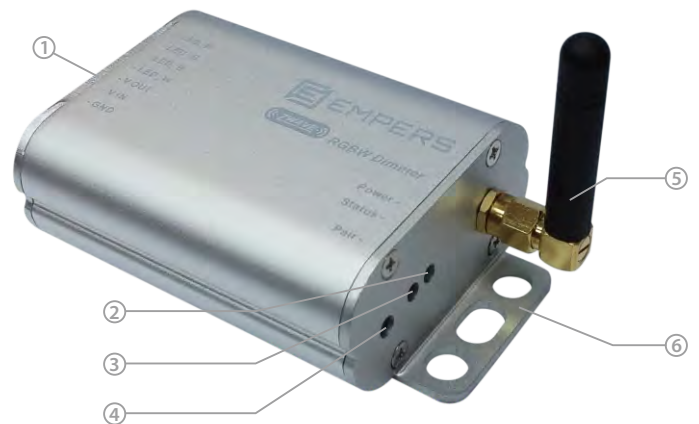
Appearance

Dimension	94x56x27mm(LxWxH), 220 Gram
Housing Material	Aluminum
Color	Silver

ZD-120 RGBW LED Dimmer

Free to change the light color

1. Terminals
2. Power LED
3. Status LED
4. Pairing button
5. Antenna
6. Wall mount



EMPERS TECH Co., Ltd.

16F-7, No. 258, Liancheng Rd.,
Zhonghe Dist., New Taipei City 235,
Taiwan (R.O.C.)

Tel: +886-2-8227-1098

Fax: +886-2-8227-1028

E-mail: glen.chiu@empers.com.tw

www.empers.com.tw